



SCIENCE AND
EDUCATION **FOR**
SUSTAINABLE
LIFE

Industrial Wood Supply Management - MSc program starting HT24

Integrates
*Wood Supply (RÅG),
Remote Sensing,
& Forest Planning*

Based on the sector's
actual competence need
- KSLA 2005
- Reference groups

Sector advisory board:
*Holmen, Södra, Norra,
Stora Enso, SCA,
Skogforsk, Sveaskog,
Westan, Biometria,
Creative Optimization*

New MSc program:

Industrial Wood Supply Management

What?

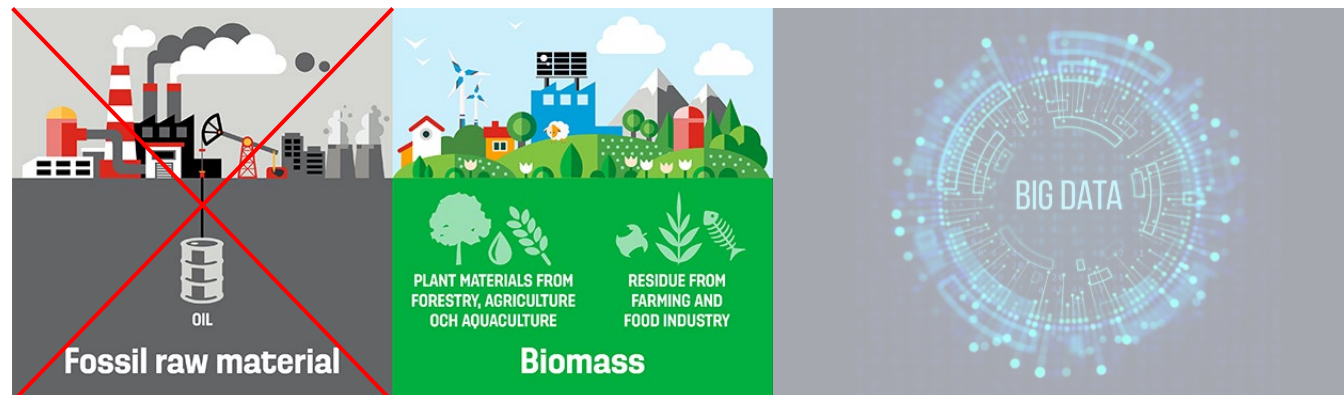
- Prepares for a professional role in industrial wood supply (*Nordic context*)
- Develops ability for management, analysis and development

Why?

- Increased demand from a limited resource base requires advanced skills
- Growing need of analytical abilities using digital data and tools

How?

- Hands-on training, theoretical analysis, and insight from leading sector experts
- Thought-through structure, varying pedagogic, high student-activity



MSc Industrial wood supply management, 120 credits, Umeå or distance*

Course name	Credits	Field of Study	Level	Pace	Period
First year					
Raw Material Properties and Refining Processes*	15	SV	A1N	100%	1
Industrial Wood Supply Strategy	15	SV	A1F	100%	2
Operational Management of Industrial Wood Supply	15	SV	A1F	100%	3
Management Control Systems** Elective	7,5	SV	A1N	100%	4a
Advanced Spatial Modelling through GIS** Elective	7,5	SV/L&O	G1F	100%	4b
Second year					
Remote Sensing and Inventory*	15	SV/BI	A1N	100%	1
Sustainable Wood Supply Analysis	15	SV	A1F	100%	2
Master's Thesis in Forestry Science	30	SV	A2E	100%	3+4

Core
competence
wood supply
management

Specialist
competence
digital
analyses

The program:

Starts with supply management courses ("RÅG")

...followed by tools- and analysis courses

Optional on-campus or distance*

**Meetings with obligatory physical presence in the first course of each year*

Notes

* Demands physical presence during about one week

** Elective courses offered within the programme

MSc Industrial wood supply management, 120 credits, Umeå or distance*

Course name	Credits	Field of Study	Level	Pace	Period
First year					
Raw Material Properties and Refining Processes*	15	SV	A1N	100%	1
Industrial Wood Supply Strategy	15	SV	A1F	100%	2
Operational Management of Industrial Wood Supply	15	SV	A1F	100%	3
Management Control Systems**	7,5	SV	A1N	100%	4a
Electives					
Advanced Spatial Modelling through GIS**	7,5	SV/L&O	G1F	100%	4b
Second year					
Remote Sensing and Inventory*	15	SV/BI	A1N	100%	1
Sustainable Wood Supply Analysis	15	SV	A1F	100%	2
Master's Thesis in Forestry Science	30	SV	A2E	100%	3+4

Requirements :

-BSc, 180 credits

-At least 60 credits in forestry subjects

-15 credits within forest technology and/or wood science/wood technology

-5 credits GIS

-English 6

Pipeline progression during the program:

→ courses give prior knowledge to the following



A1F courses require 2/3 of the credits from previous program courses, with the exception of the immediately preceding course where half the credits are sufficient



Courses in Wood Supply Management

Course name	Credits	Field of Study	Level	Pace	Period
First year					
Raw Material Properties and Refining Processes*	15	SV	A1N	100%	1
Industrial Wood Supply Strategy	15	SV	A1F	100%	2
Operational Management of Industrial Wood Supply	15	SV	A1F	100%	3
Management Control Systems**	7,5	SV	A1N	100%	4a
Advanced Spatial Modelling through GIS**	7,5	SV/L&O	G1F	100%	4b
Second year					
Remote Sensing and Inventory*	15	SV/BI	A1N	100%	1
Sustainable Wood Supply Analysis	15	SV	A1F	100%	2
Master's Thesis in Forestry Science	30	SV	A2E	100%	3+4

Raw Material Properties and Refining Processes

Provides understanding of the role of raw material properties in forest industrial supply:

Products, processes, and raw material demands



Industrial Wood Supply Strategy

Trains the ability to understand, plan and analyze forest industrial supply strategies:

Market contexts, supply planning, wood purchase and trade, infrastructure planning, flow planning



Operational Management of Industrial Wood Supply

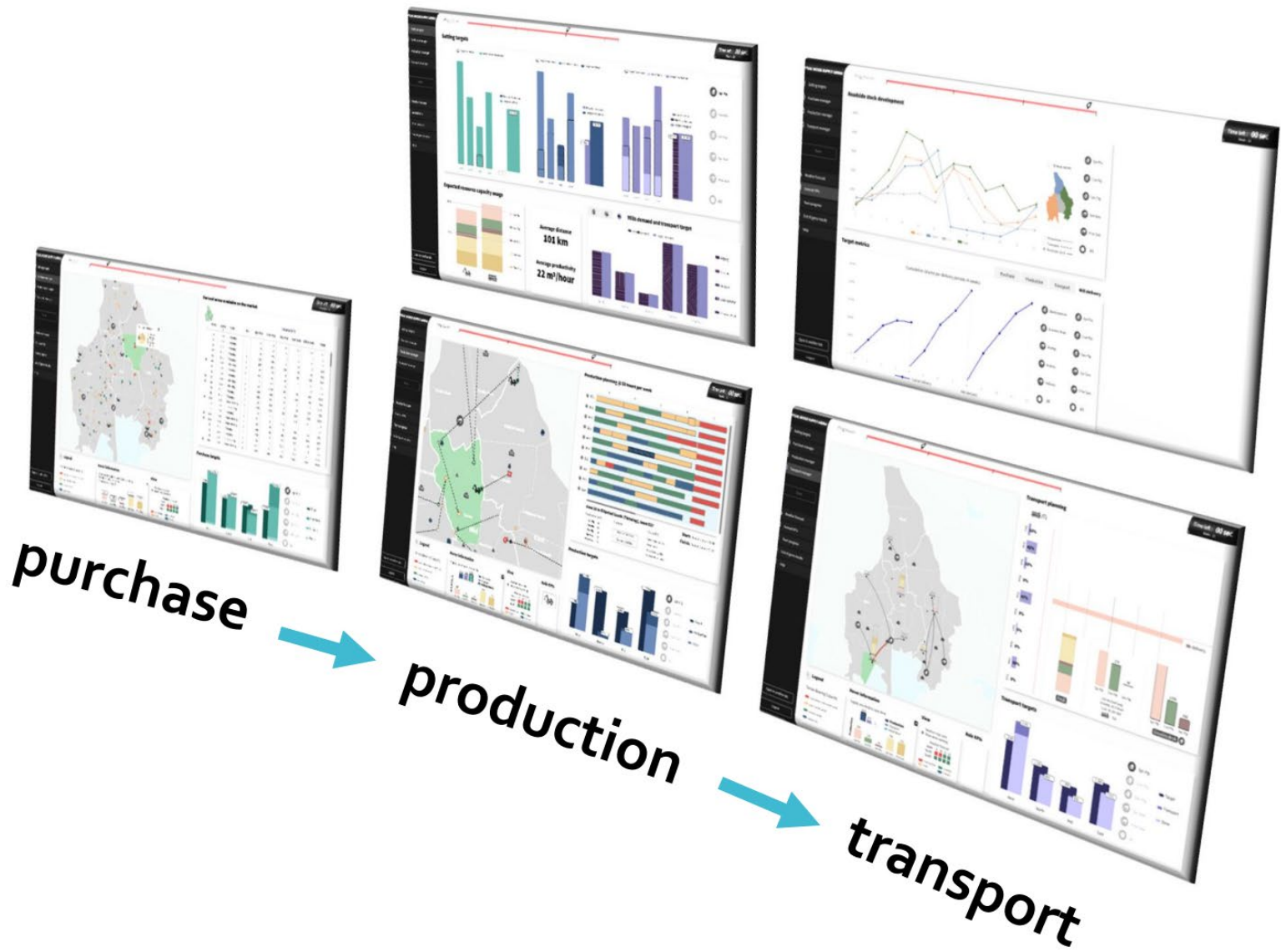
Trains the ability to efficiently plan and control operations:

Management of production and transport (truck, train, boat), and coordination of supply chain activities from forest to mill



A new generation of training tools

Virtual wood supply arena



Students who pass all three supply management courses receive a diploma

Plus award to those with the best study results



Diplom i Skogsindustriell råvaruförsörjning

Virke Råggersén

har genomgått RÅG-stråket

RÅG-stråket är ett kursstråk under Jägmästarutbildningens fjärde år som förbereder för yrkesverksamhet inom skogsbrukets huvudprocess – att införskaffa råvara på effektivaste sätt. För detta behöver sektorn kvalificerad personal som förstår och kan analysera försörjningssystemet i sin helhet utifrån ett marknadsrelaterat perspektiv och kan medverka i utvecklingen av det hållbara försörjningssystemet.


Kursstråket har genomgåts under höstterminen 2020 och vårterminen 2021 och bestod av följande kurser:


SG0254	Råvaruegenskaper och förädlingsprocesser	(15 hp)
SG0216	Skogsindustriell försörjningsstrategi	(15 hp)
SG0217	Operativ styrning av virkesleveranser	(15 hp)

RÅG-stråket har utformats i samarbete med näringen, med representanter från flera stora aktörer inom skogsindustriell råvaruförsörjning.


Henrik Sakari
SCA


Anna Högvall
Westan



Mikael Frisk
Creatize Optimization


Linnea Gille
Holmen



Lars Björklund
Biometria


Karl Narfström
Stora Enso



Magnus Thor
Skogforsk


Nils Broman
Norra Skog


Tanja Keisu
Biometria Labs


Thomas Frick
Södra

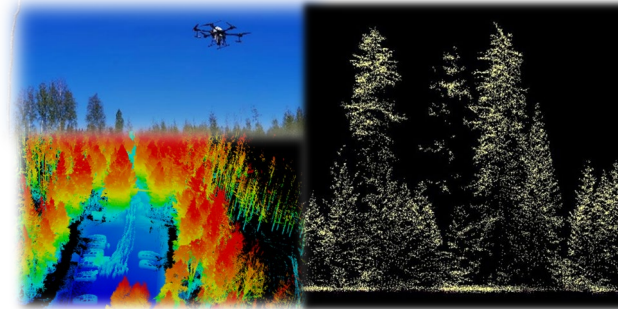

Magnus Rudolfsson
SLU


Emanuel Erlandsson
SLU

Remote Sensing and Inventory

Provides know-how of using data from remote sensing and forest inventory:

Applications, integration, data collection, processing, modelling



Course name	Credits	Field of Study	Level	Pace	Period
First year					
Raw Material Properties and Refining Processes*	15	SV	A1N	100%	1
Industrial Wood Supply Strategy	15	SV	A1F	100%	2
Operational Management of Industrial Wood Supply	15	SV	A1F	100%	3
Management Control Systems**	7,5	SV	A1N	100%	4a
Advanced Spatial Modelling through GIS**	7,5	SV/L&O	G1F	100%	4b
Second year					
Remote Sensing and Inventory*	15	SV/BI	A1N	100%	1
Sustainable Wood Supply Analysis	15	SV	A1F	100%	2
Master's Thesis in Forestry Science	30	SV	A2E	100%	3+4

Sustainable Wood Supply Analysis (New!)

Advances the ability to develop sustainable and competitive supply strategies, and mastering methods to handle uncertainties and unforeseen events:

Scenario development, competitiveness analysis, case applications



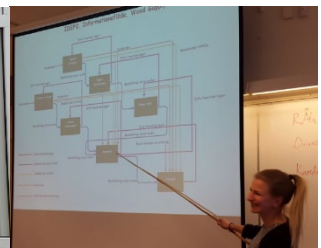
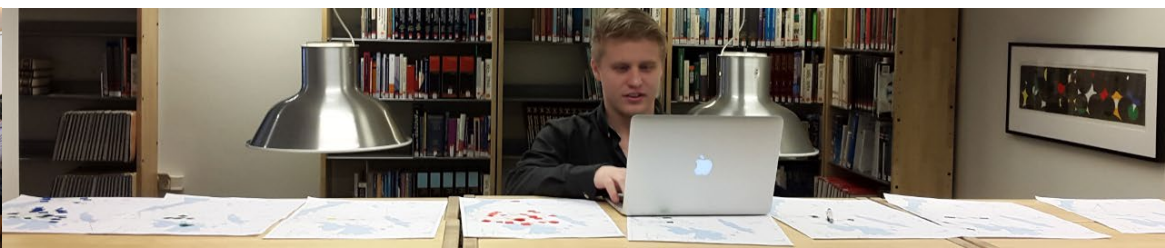
A new program,
but...

10-20 years of
experience from
many included
courses

Considered
structured and
relevant, but also
demanding

Course evaluations

Course	Credits	Year	Overall impression
Raw materials and refining processes	15	2023	4,3
Forest Industrial Supply Strategy	15	2023	4,5
Operational Management of Wood Supply	15	2023	4,5
Remote Sensing and Inventory	15	2023	4,0



Contact

Emanuel.Erlandsson@slu.se
090-786 84 37

[Program website](#)

***Industrial Wood Supply
Management is about reality
– training you for what
you're really gonna do***

