



SCIENCE AND  
EDUCATION **FOR**  
**SUSTAINABLE**  
**LIFE**



MSc program

***Industrial Wood  
Supply Management***

## The program:

Provides hands-on training for a professional role in industrial wood supply

Based on the sector's actual competence need (*Advisory board*)

Starts with supply management courses ("RÅG")

...followed by tools- and analysis courses

Optional on-campus in Umeå or *on distance*\*

*\*Meetings with obligatory physical presence in the first course of each year*

## MSc Industrial wood supply management, 120 credits, Umeå or distance\*

Course name	Credits	Field of Study	Level	Pace	Period
<b>First year</b>					
Raw Material Properties and Refining Processes*	15	SV	A1N	100%	1
Industrial Wood Supply Strategy	15	SV	A1F	100%	2
Operational Management of Industrial Wood Supply	15	SV	A1F	100%	3
Management Control Systems** <span style="color: red;">Elective</span>	7,5	SV	A1N	100%	4a
Advanced Spatial Modelling through GIS** <span style="color: red;">Elective</span>	7,5	SV/L&O	G1F	100%	4b
<b>Second year</b>					
Remote Sensing and Inventory*	15	SV/BI	A1N	100%	1
Sustainable Wood Supply Analysis	15	SV	A1F	100%	2
Master's Thesis in Forestry Science	30	SV	A2E	100%	3+4

Core competence wood supply management

Specialist competence digital analyses

### Notes

\* Demands physical presence during about one week

\*\* Elective courses offered within the programme



# Courses in Wood Supply Management

Course name	Credits	Field of Study	Level	Pace	Period
<b>First year</b>					
Raw Material Properties and Refining Processes*	15	SV	A1N	100%	1
Industrial Wood Supply Strategy	15	SV	A1F	100%	2
Operational Management of Industrial Wood Supply	15	SV	A1F	100%	3
Management Control Systems**	7,5	SV	A1N	100%	4a
Advanced Spatial Modelling through GIS**	7,5	SV/L&O	G1F	100%	4b
<b>Second year</b>					
Remote Sensing and Inventory*	15	SV/BI	A1N	100%	1
Sustainable Wood Supply Analysis	15	SV	A1F	100%	2
Master's Thesis in Forestry Science	30	SV	A2E	100%	3+4

## Raw Material Properties and Refining Processes

Provides understanding of the role of raw material properties in forest industrial supply:

*Products, processes, and raw material demands*



## Industrial Wood Supply Strategy

Trains the ability to understand, plan and analyze forest industrial supply strategies:

*Market contexts, supply planning, wood purchase and trade, infrastructure planning, flow planning*



## Operational Management of Industrial Wood Supply

Trains the ability to efficiently plan and control operations:

*Management of production and transport (truck, train, boat), and coordination of supply chain activities from forest to mill*





# A new generation of training tools

## Virtual wood supply arena



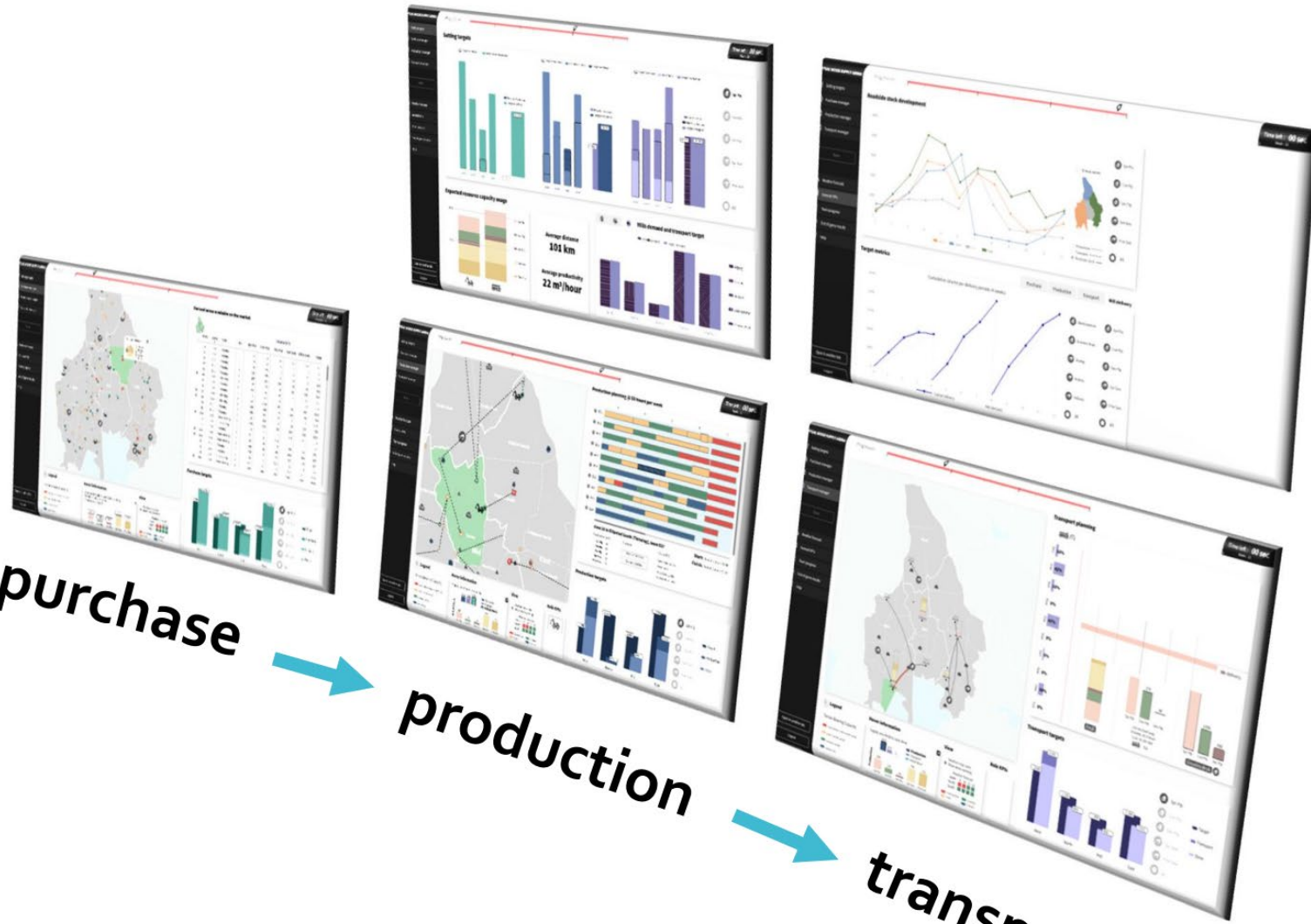
**purchase**



**production**



**transport**



Students who pass all three supply management courses receive a diploma (*well-known in the sector!*)

Plus award to those with the best study results



## Diplom i Skogsindustriell råvaruförsörjning

### *Virke Råggersén*

har genomgått RÅG-stråket

RÅG-stråket är ett kursstråk under Jägmästarutbildningens fjärde år som förbereder för yrkesverksamhet inom skogsbrukets huvudprocess – att införskaffa råvara på effektivaste sätt. För detta behöver sektorn kvalificerad personal som förstår och kan analysera försörjningssystemet i sin helhet utifrån ett marknadsrelaterat perspektiv och kan medverka i utvecklingen av det hållbara försörjningssystemet.

Kursstråket har genomgåts under höstterminen 2020 och vårterminen 2021 och bestod av följande kurser:

SG0254	Råvaruegenskaper och förädlingsprocesser	(15 hp)
SG0216	Skogsindustriell försörjningsstrategi	(15 hp)
SG0217	Operativ styrning av virkesleveranser	(15 hp)

RÅG-stråket har utformats i samarbete med näringen, med representanter från flera stora aktörer inom skogsindustriell råvaruförsörjning.

*Henrik Sakari*  
SCA

*Anna Högvall*  
Westan

*Mikael Frisk*  
Creatize Optimization

*Linnea Gille*  
Holmen

*Lars Björklund*  
Biometria

*Karl Narfström*  
Stora Enso

*Magnus Thor*  
Skoqforsk

*Nils Broman*  
Norra Skog

*Tanja Keisu*  
Biometria Labs

*Thomas Frick*  
Södra

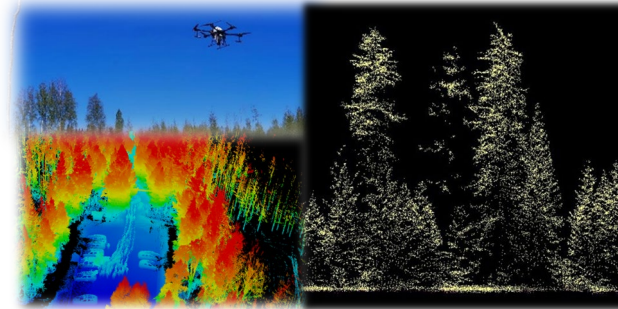
*Magnus Rudolfsson*  
SLU

*Emanuel Erlandsson*  
SLU

## Remote Sensing and Inventory

Provides know-how of using data from remote sensing and forest inventory:

*Applications, integration, data collection, processing, modelling*



Course name	Credits	Field of Study	Level	Pace	Period
<b>First year</b>					
Raw Material Properties and Refining Processes*	15	SV	A1N	100%	1
Industrial Wood Supply Strategy	15	SV	A1F	100%	2
Operational Management of Industrial Wood Supply	15	SV	A1F	100%	3
Management Control Systems**	7,5	SV	A1N	100%	4a
Advanced Spatial Modelling through GIS**	7,5	SV/L&O	G1F	100%	4b
<b>Second year</b>					
Remote Sensing and Inventory*	15	SV/BI	A1N	100%	1
Sustainable Wood Supply Analysis	15	SV	A1F	100%	2
Master's Thesis in Forestry Science	30	SV	A2E	100%	3+4

## Sustainable Wood Supply Analysis (New!)

Advances the ability to develop sustainable and competitive supply strategies, and mastering methods to handle uncertainties and unforeseen events:

*Scenario development, competitiveness analysis, case applications*





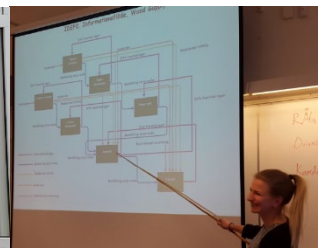
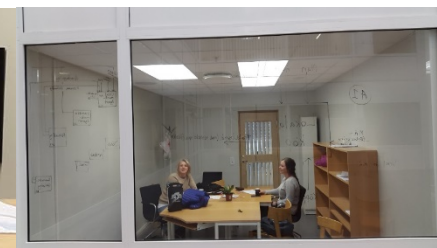
# Course evaluations

10-20 years of experience from many included courses

Thought-through structure, varying pedagogics, high student-activity with hands-on training

Considered relevant, but also demanding

Course	Credits	Year	Overall impression
Raw materials and refining processes	15	2023	4,3
Forest Industrial Supply Strategy	15	2023	4,5
Operational Management of Wood Supply	15	2024	4,9
Remote Sensing and Inventory	15	2024	4,0





## MSc Industrial wood supply management, 120 credits, Umeå or distance\*

Course name	Credits	Field of Study	Level	Pace	Period
<b>First year</b>					
Raw Material Properties and Refining Processes*	15	SV	A1N	100%	1
Industrial Wood Supply Strategy	15	SV	A1F	100%	2
Operational Management of Industrial Wood Supply	15	SV	A1F	100%	3
Management Control Systems**	7,5	SV	A1N	100%	4a
<b>Electives</b>					
Advanced Spatial Modelling through GIS**	7,5	SV/L&O	G1F	100%	4b
<b>Second year</b>					
Remote Sensing and Inventory*	15	SV/BI	A1N	100%	1
Sustainable Wood Supply Analysis	15	SV	A1F	100%	2
Master's Thesis in Forestry Science	30	SV	A2E	100%	3+4

### Requirements *before* the program:

-BSc, 180 credits

-At least 60 credits in forestry subjects

-15 credits within forest technology and/or wood science/wood technology

-5 credits GIS

-English 6

Key subjects

### Requirements *during* the program:

- Pipeline progression!  
 → *courses give prior knowledge to the following*



A1F courses require 2/3 of the credits from previous program courses, with the exception of the immediately preceding course where half the credits are sufficient

# Contact

[Emanuel.Erlandsson@slu.se](mailto:Emanuel.Erlandsson@slu.se)  
090-786 84 37

[Program website](#)

***Industrial Wood Supply  
Management is about reality  
– training you for what  
you're really gonna do***

