

# Euroforester Master's Programme

Per-Ola Hedwall

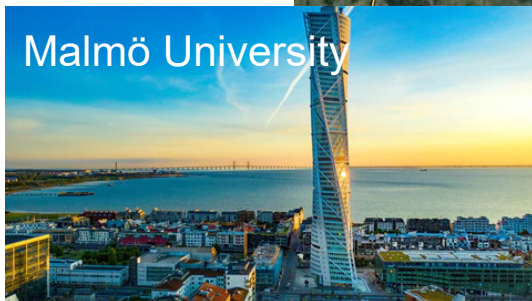
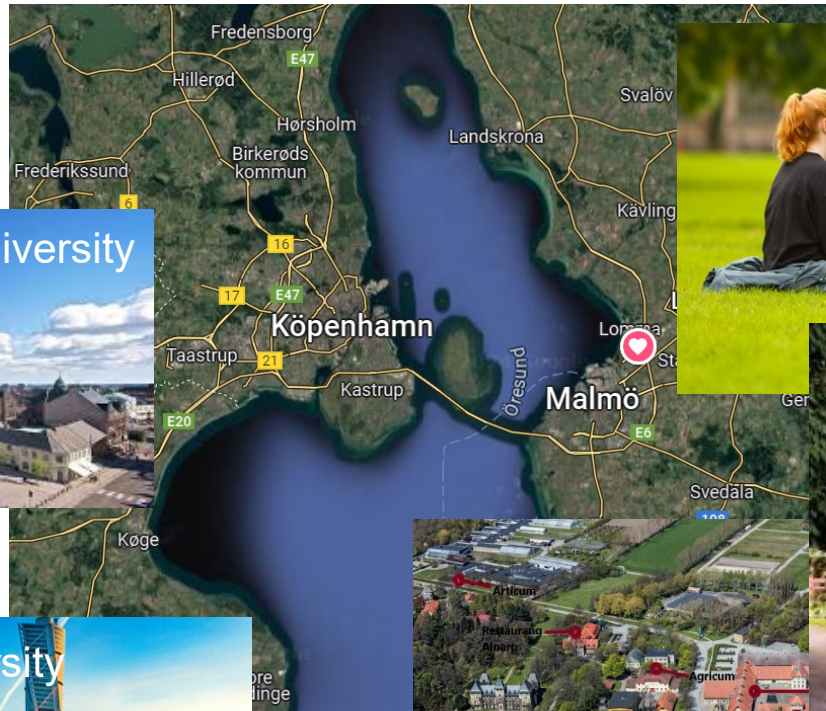
SLU, Southern Swedish Forest Research Centre, Alnarp



# EUROFORESTER

The master's programme Euroforester has an international profile and focuses on sustainable management of forest ecosystems and the forest landscape, as well as on adapting forestry to global environmental changes. The programme gives students the opportunity to specialize in the temperate and boreal forests of Europe.

# Study environment – Campus Alnarp





## Euroforester leads to...

- A degree of **Master of Science** with a major in **Forestry Science** is awarded to students who fulfil the course requirements (courses with a Pass grade) of 120 credits, according to the following:
  - at least 30 credits of courses with specialised study in the main field Forestry Science
  - at least 30 credits degree project in Forestry Science

# Entry requirements

Bachelor degree - 180 ECTS of which 60 ECTS must be in one of these subjects:

Biology

Forest science

Forestry science

Forest management

Environmental science

Natural resource management

English 6

## Courses

Profile courses: year 1

Eligible courses: one semester year 2

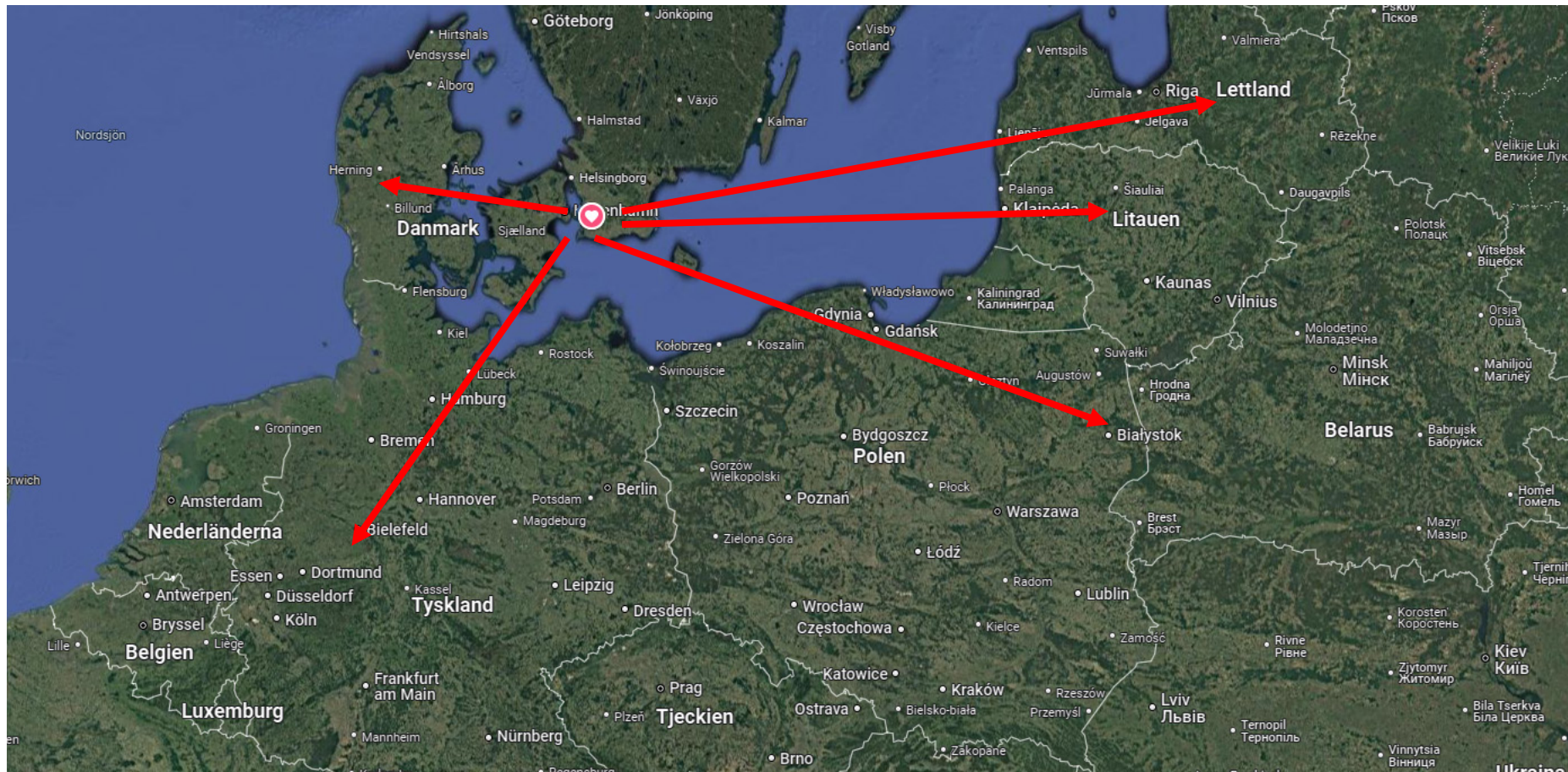
Master's thesis: one or two semester(s) year 2







# And abroad...





# What the students get!

- Knowledge for a career in the forest sector and beyond
- In-depth knowledge and transferrable skills, preparing for a career in the international forest sector
- An understanding of the region and the settings for forestry
- A holistic view, much wider than mere production and profit
- Euroforester network – alumnies from more than 20 years





## Professional field

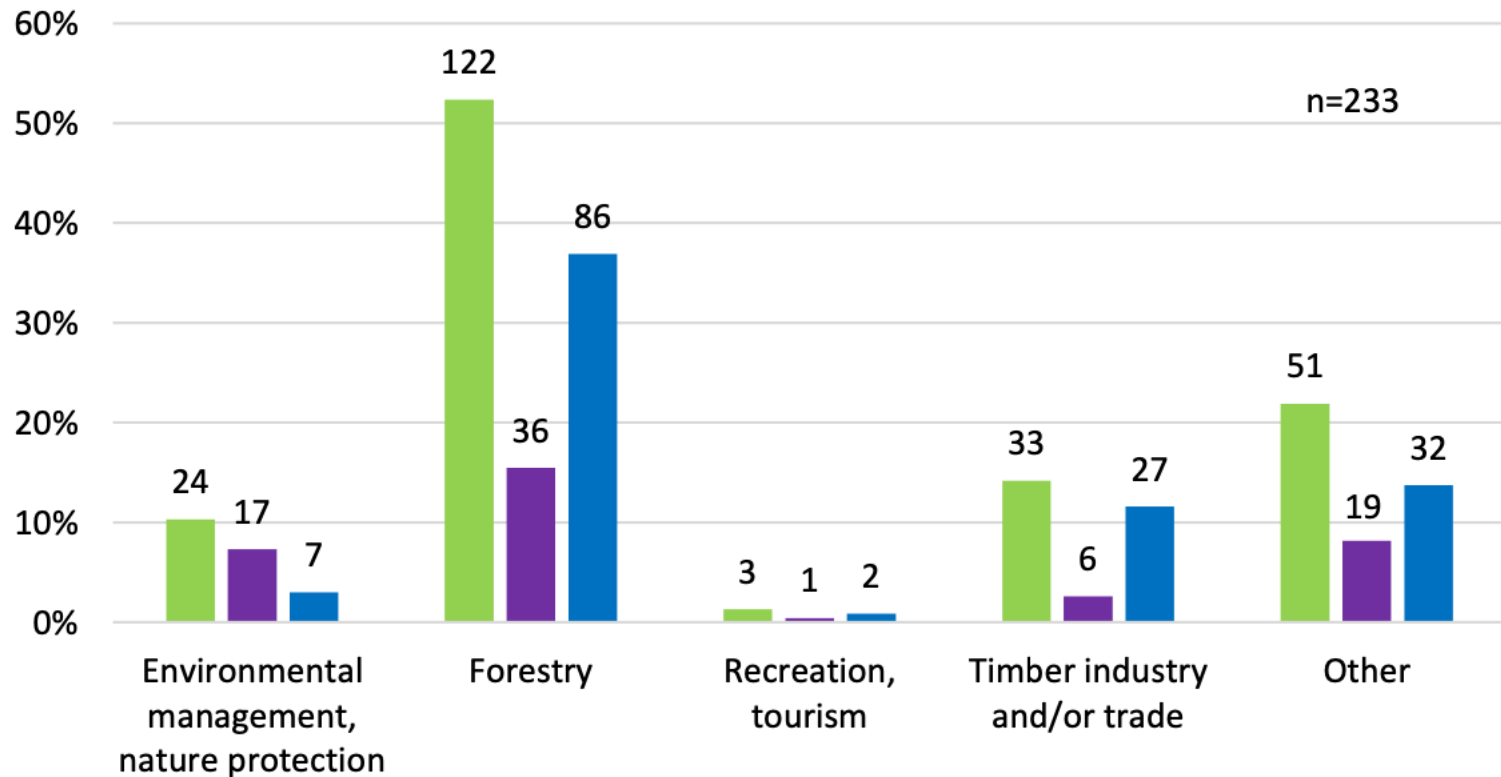


Figure 7. Respondent's professional field in percentage. Absolute values are reported on top of the bar. Colours indicate the total (green), female (purple) and male (blue) number of respondents.

# Euroforester syllabus

YEAR 1					
Profile courses					
Autumn semester			Spring semester		
Period 1 (Sep-Oct) 15 credits		Period 2a (Nov-Jan) 15	Period 3 (Jan-Mar) 15 credits		Period 4 (Mar-Jun) 15 credits
Silviculture of temperate forests		Sustainable Forest Management - Analysis and Adaptations	National and International Forest Policy		Broadleaves: history, ecology and management
YEAR 2					
1 semester <b>elective</b> courses and 1 semester MSc thesis					
Autumn semester			Spring semester		
Period 1 (Sep-Oct) 7.5 credits	7.5 credits	Period 2a (Nov-Jan) 15 credits	Period 3 (Jan-Jun) 30		Period 4
Forest regeneration	Forest modelling	Forest Conservation Biology OR Urban forestry	Master's thesis		



# Silviculture of temperate forests

- 15 credits • period 1 • Alnarp campus
- 20 Hardwood species, 10 conifer species
- Objective-oriented, site-specific
- Close to nature silviculture





# Sustainable forest management – analysis and adaptations

• 15 credits • period 1 • Alnarp campus

- Forest management emphasising diversification, adaptation to climate change and with a focus on many ecosystem services
- The science of continuous cover forestry, retention forestry, intensive management and multiple-use forestry.





# National and International Forest Policy

SG0234 • 15 credits • period 3 • Alnarp campus



- Focus on the interface between forest and society
- Scrutinising policies at national, regional and global levels
- Top international experts in the teacher team
- Active learning (e.g. through role play), international study trip

# Broadleaves – history, ecology and management

- 15 credits • period 4 • Alnarp campus
- This is the only comprehensive MSc level course in Sweden on the ecology and management of temperate broad-leaved forests
- We study the past, present and future of these forests, including biodiversity conservation, timber production, forest damage and restoration
- The course includes excursions in southern Sweden and a study trip to the famous Bialowieza primeval forest in eastern Poland (if possible)





# Master's thesis in Forestry Science

• 30 credits • period 2 “but flexible” • Alnarp campus



**Growth and management of Silver birch and Hybrid aspen in southern Sweden**

---

## Conservation Management in Riparian Zones

– A follow up of the Nissan water management agreement.

---



## Forest damage in the eyes of scientists

Framing damage perspectives in Swedish forestry

---

Design Johanna Witzell

Southern Swedish Forest Research Centre

**Thank you for your attention!**

Per-Ola Hedwall, Euroforester Programme director of studies

**More info:**

[Euroforester programme on SLU web](#)

[Student life Campus Alnarp](#)

SCIENCE AND  
EDUCATION  
**FOR  
SUSTAINABLE  
LIFE**



# Forest regeneration

• 7.5 credits • period 1a • Alnarp campus

- Overview of the complete chain of forest regeneration
- Insight in the complexity of regeneration methods in north-European forestry

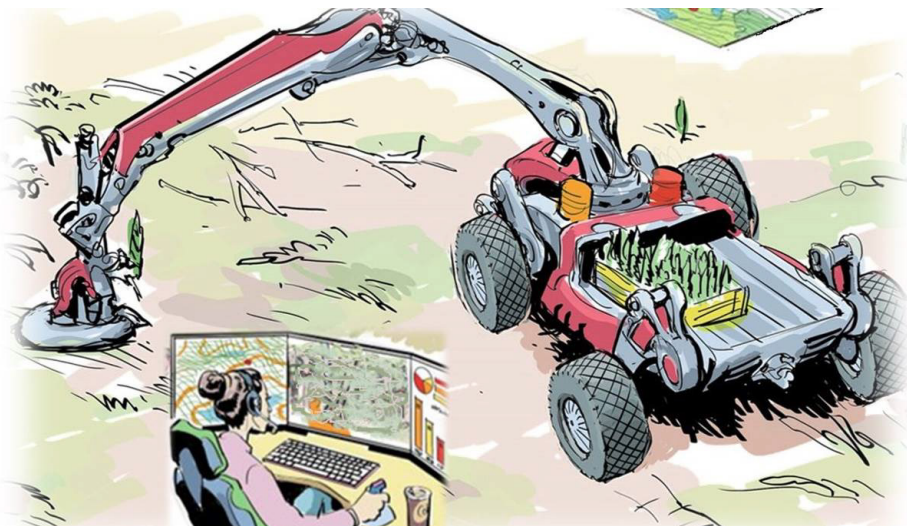
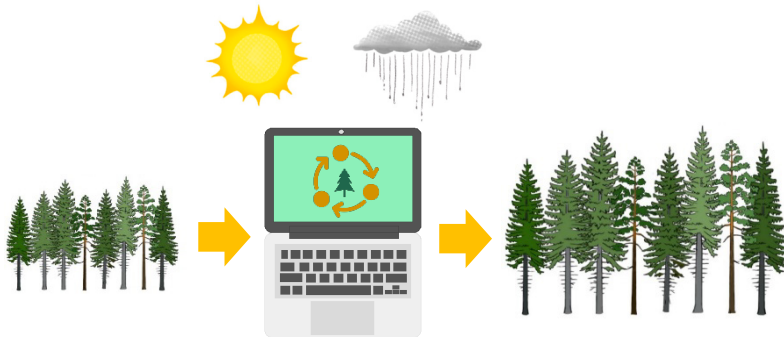


Photo: Skogforsk

# Forest modelling

• 7.5 credits • period 1b • Alnarp campus

- What are forest production models, and how are they developed and applied to predict forest growth?
- Students get an in-depth understanding of forest models that are used to predict forest development with and without climate change





# Urban Forestry - Management of urban forests and tree

• 15 credits • period 2 • Alnarp campus

- Transdisciplinary course about urban woodlands and trees
- Inventory, analysis and management - in theory and practice for multifunctional uses and services of urban woods and trees
- Covers a wide range of urban environments

