



## Cisco AnyConnect Installation For Windows 7

You can download the VPN client which is used for connecting to resources in the SLU network from outside SLU campus area if you visit one of these web pages.

### Addresses to VPN servers if you are located outside the SLU network

Place	Address
<b>Alnarp</b>	<a href="https://vpn-alnarp.slu.se/">https://vpn-alnarp.slu.se/</a>
<b>Skara</b>	<a href="https://vpn-skara.slu.se/">https://vpn-skara.slu.se/</a>
<b>Umeå</b>	<a href="https://vpn-umea.slu.se/">https://vpn-umea.slu.se/</a>
<b>Uppsala</b>	<a href="https://vpn-uppsala.slu.se/">https://vpn-uppsala.slu.se/</a>

### For testing VPN if you are inside the SLU network

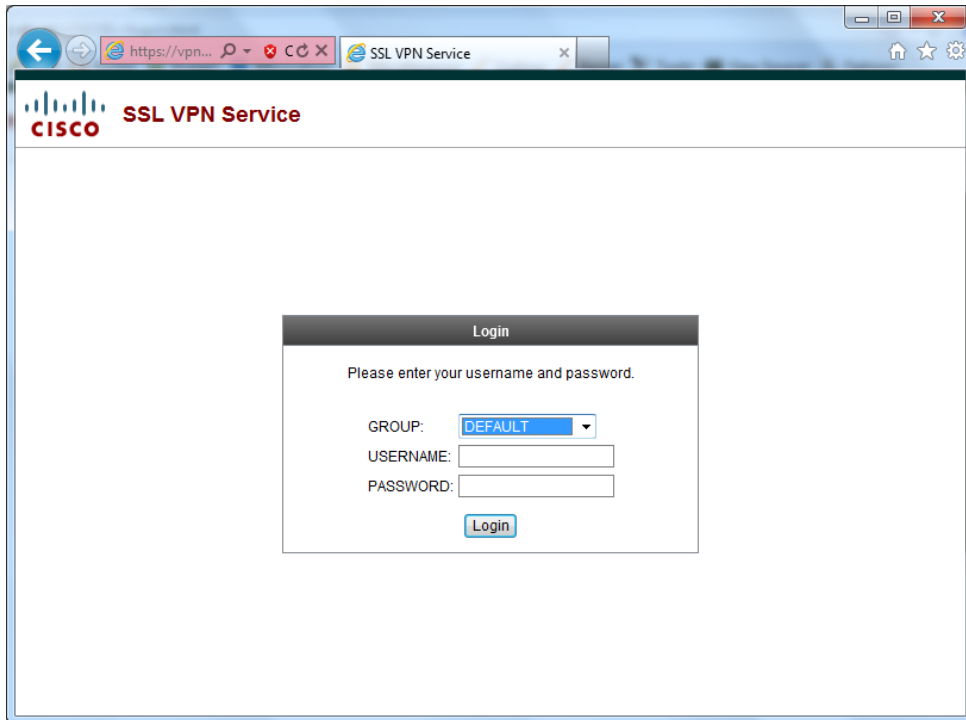
Place	Address
<b>Alnarp</b>	<a href="https://vpn-local-alnarp.slu.se/">https://vpn-local-alnarp.slu.se/</a>
<b>Skara</b>	<a href="https://vpn-local-skara.slu.se/">https://vpn-local-skara.slu.se/</a>
<b>Umeå</b>	<a href="https://vpn-local-umea.slu.se/">https://vpn-local-umea.slu.se/</a>
<b>Uppsala</b>	<a href="https://vpn-local-uppsala.slu.se/">https://vpn-local-uppsala.slu.se/</a>

We recommend that you use Internet Explorer and allow an ActiveX component to be started.

### Log on to the VPN service

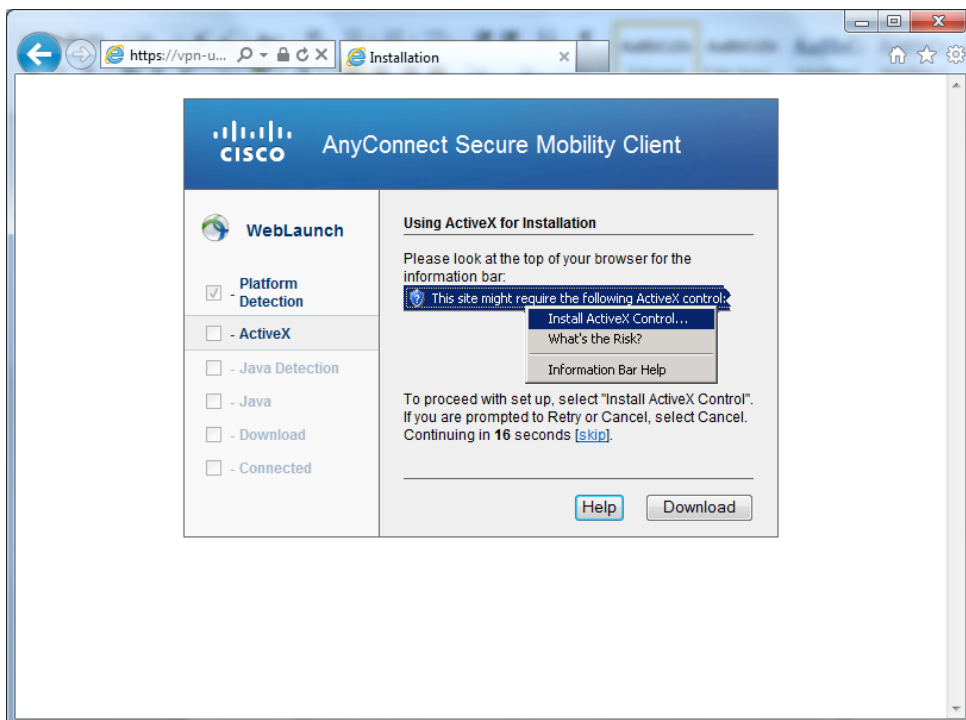
When you visit one of the pages in the list shown above you will have to choose which group you wish to connect to. Normally you should use DEFAULT. It is only people who have special authority to restricted resources who should choose anything else, and they have got their own instructions.

Type your user name and password for your AD account (which is the same that you normally use to log on to your computer at SLU.)

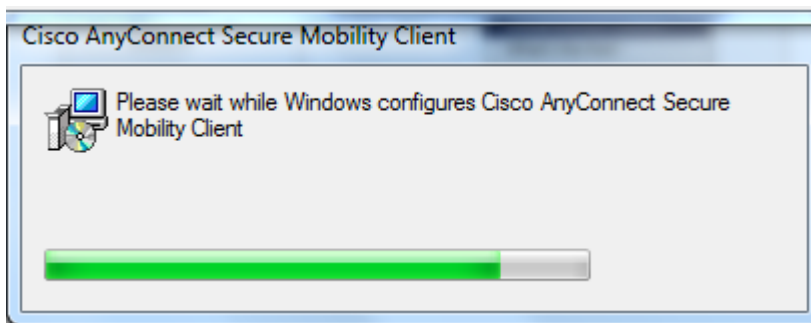
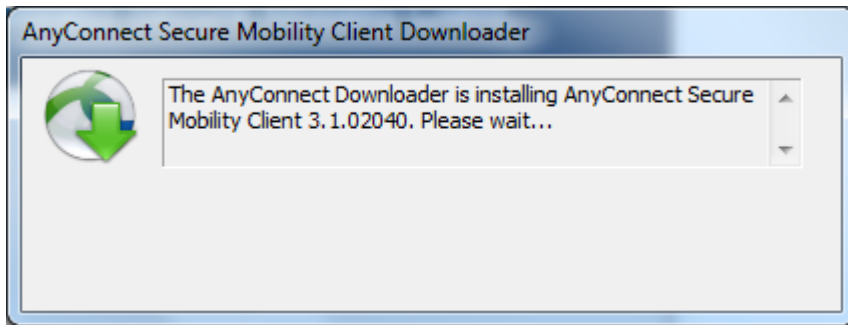


Click the "Login" button when you have typed in user name and password.

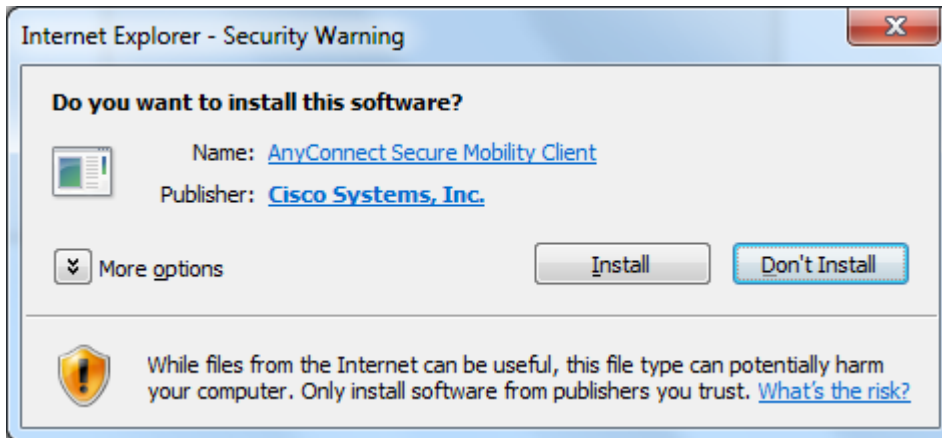
If this is the first time you are using VPN on the computer the web site will now try to download a client program. That program will later be used for connecting your computer to the SLU network.



First there will pop up a window with some status information. If you are using Internet Explorer and have given permission to use ActiveX the downloading of the client will start and two new dialogue boxes will open.



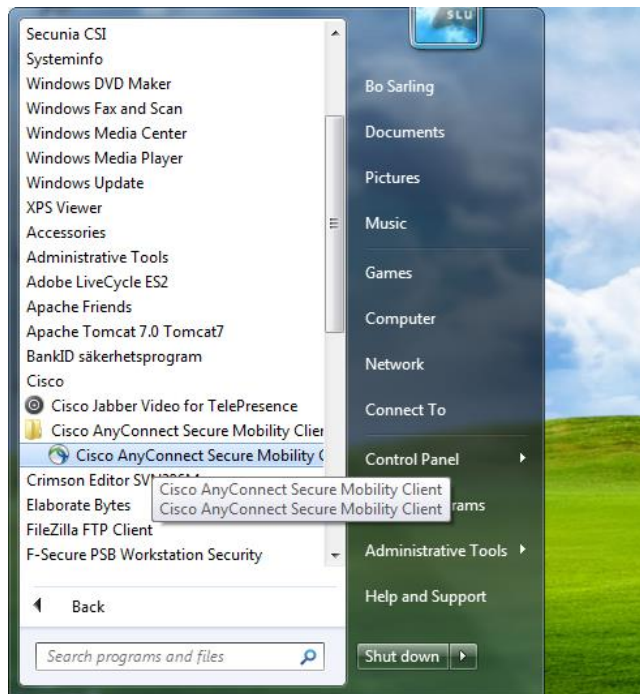
When the download is done Windows will ask if you wish to install the client. Click on the "Install" button.



The installation will be completed, a short message will be displayed in the bottom right corner of the screen and then you will be connected to SLU via VPN.

## Start the VPN client

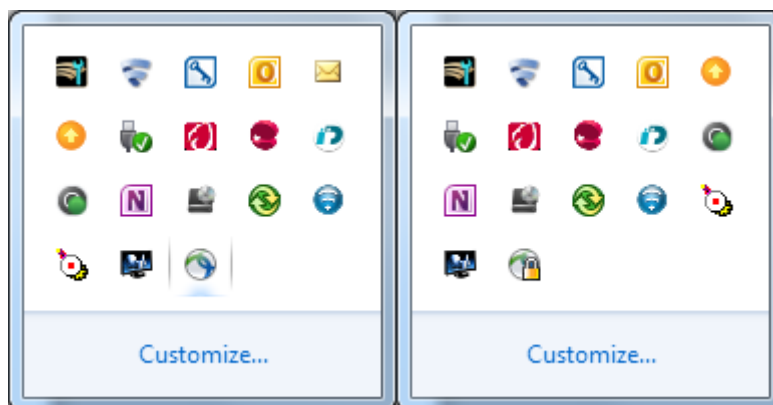
When you wish to start a VPN session after the client has been installed you can open the start menu in Windows and look for the Cisco AnyConnect client and click the program icon.



**Or** you can visit one of the web pages listed in the first section of this manual and type your user name and password and click the "Login" button. You will then be logged on automatically.

## Logging on via VPN to SLU

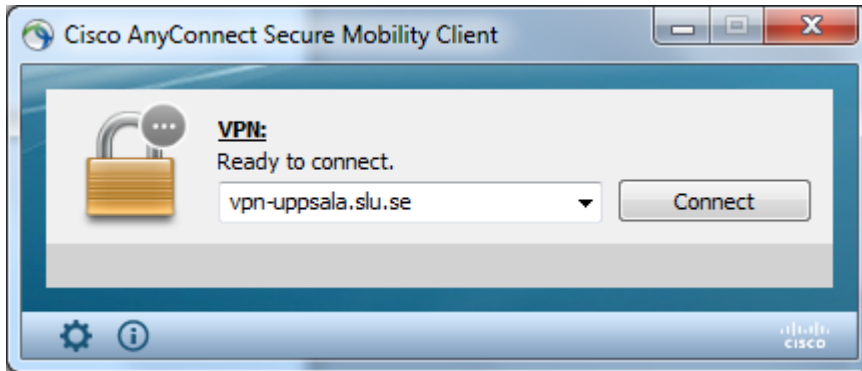
When you wish to log on to SLU via VPN you should search for an icon in the field "Hidden icons" which you can find in the task bar (the place where you also can find the Start button). Search for the small icon with a triangle pointing upwards and click on it. A dialogue box looking something like this should pop up.



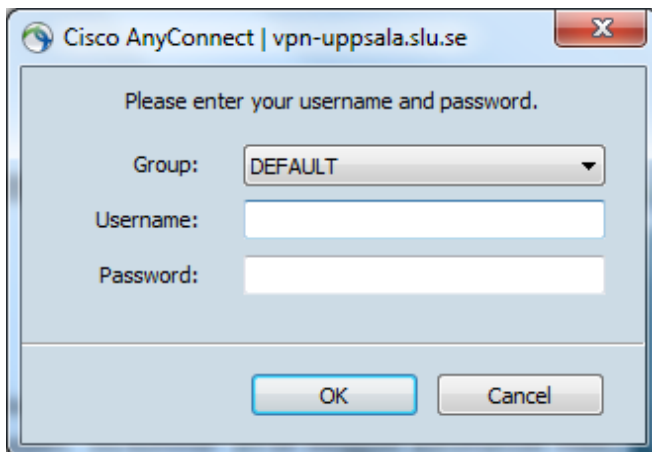
Click the icon that looks like a gray globe or tennis ball (above it is located in the lower right corner in the left half of the picture). If you are already connected the icon will have a small padlock attached to it (like the way it is in the right half of the picture above).

If the icon isn't there at all you must start according to the instructions in the previous section of this guide.

When you begin the log on the first VPN dialogue box pops up:



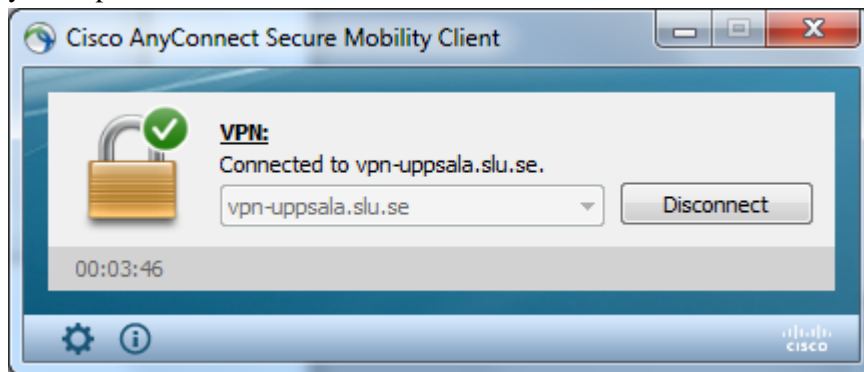
Choose the location you wish to connect to from the list and click the "Connect" button.



Type in your user name and password and click the "OK" button. You will now be connected and the dialogue boxes disappears. Instead you will see a message telling that you are connected.

## Disconnect VPN

Go to "Show hidden icons" as described above and click the gray globe icon with a yellow padlock. Choose "Disconnect".



## Errors

We have noticed that it might sometimes happen that firewalls are stopping AnyConnect from creating the connection.

If your computer has F-Secure installed there should be no problems, but if you have Panda AntiVirus it will not work.